

**UREATAC CO.,Ltd.**

# 974-7 Yangdeok-Dong, Masan-Hoewongu, Changwon-si Kyungnam, Korea  
TEL : +82-55-261-9110 | FAX : +82-55-261-9188  
E-mail : sales@ureatac.co.kr

**UREATAC CHINA (Suzhou UREATac Technology CO.,Ltd.)**

中国江苏省苏州市工业园区吴淞路30号 (No.30, Wupu Road, Suzhou Industrial Park, Jiangsu Province, China)  
TEL : +86-512-6281-8699 | FAX : +86-512-6281-8799  
E-mail : taihao0903@163.com

**UREATAC INDIA (UREATac India Pvt. Ltd.)**

Sr. No. 33, Office No. 404, 4th floor, Building A, East Court,  
Phoenix market City, Nagar Road, Pune-411014,  
TEL : +91-20-67090500 | FAX : +91-20-67090500  
E-mail : sanchit.k@ureatacindia.com

**UREATAC MEXICO (Lbs Monterrey Mexico,S,A de C.V)**

Lbs Monterrey Mexico,S,A de C.V  
AVE.Luis Donaldo colosio NO.288-A, Desarrollo  
Industrial el sabinal, Apodaca N.L Mexico C.P. 66640  
TEL : +52-81-8145-3501 | FAX : +52-81-8145-3501  
E-mail : ureatacmm@gmail.com

[www.ureatac.co.kr](http://www.ureatac.co.kr)



**High Pressure  
PU Metering Machine**

## UREATac's High pressure PU metering machine are the best Solution for your production.

UREATac's PU metering machine and mixing heads has the best solution for all kinds of PU products and high technology metering and mixing effect with high class metering pumps and mixing heads.

- UREATac has developed innovative mixing heads which all of customers are satisfied.
- UREATac has developed mixing heads of optimum process design to cover whole range of PU system.
- UREATac has developed mixing heads based on over 20 years experience in field of PU machines and plant engineering.
- UREATac mixing heads can be used without any trouble and any problems on all kinds of high pressure PU metering machines.
- UREATac make two kinds of mixing heads.
  - L-Type Mixing Heads
  - Straight type Mixing Heads
- UREATac's all mixing heads are available as multi components. (2~6 components)



- Rigid integral skin foam
  - Density range : 180~1,100 kg/m<sup>3</sup>
  - A:B = approx 1:1
- Rigid foam
  - Density range : 10~200 kg/m<sup>3</sup>
  - A:B = approx 1:1



- Hot curing flexible foam
  - Density range : 25~50 kg/m<sup>3</sup>
  - A:B = approx 2:1
- Cold curing flexible foam
  - Density range : 20~70 kg/m<sup>3</sup>
  - A:B = approx 2:1 or 3:1

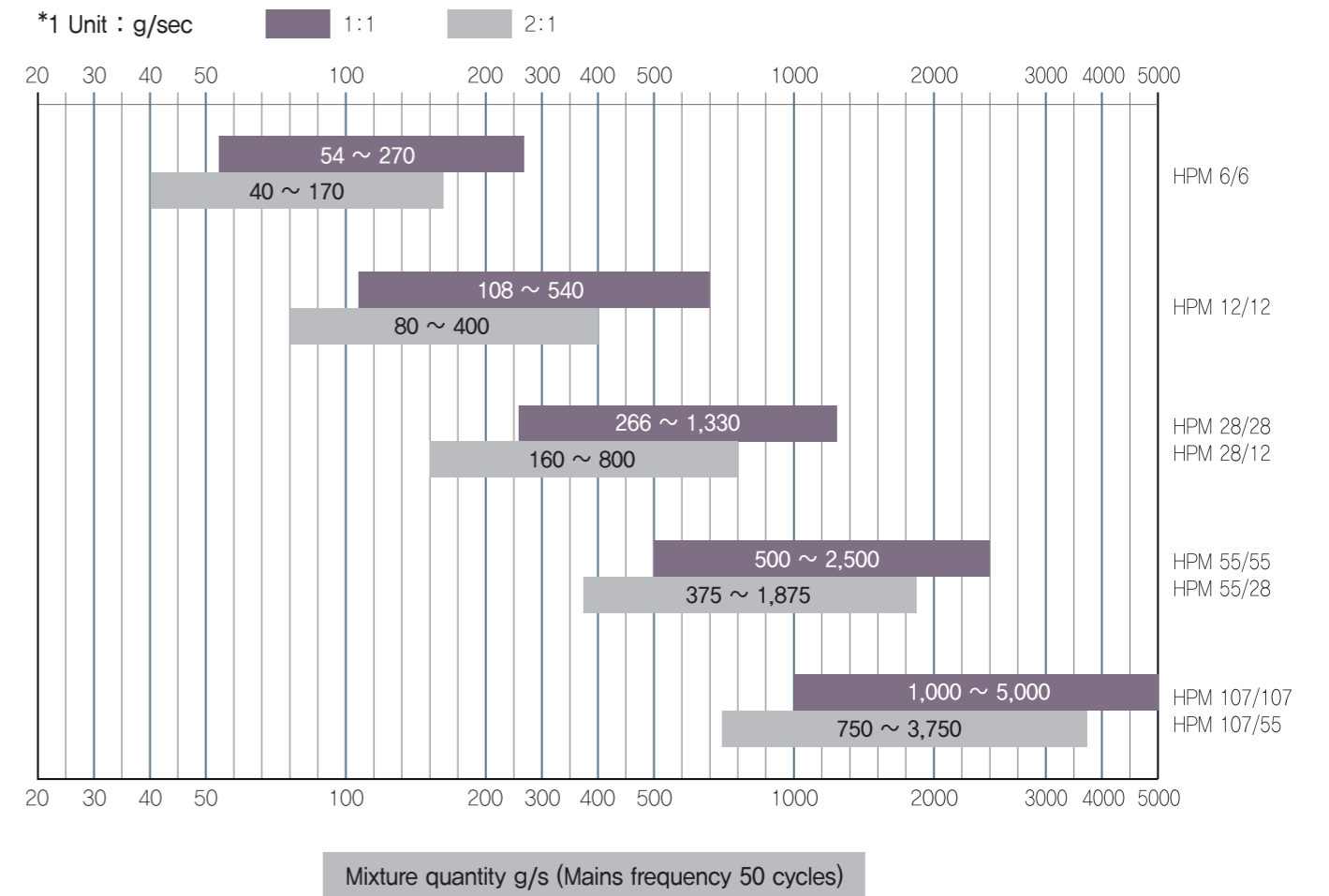
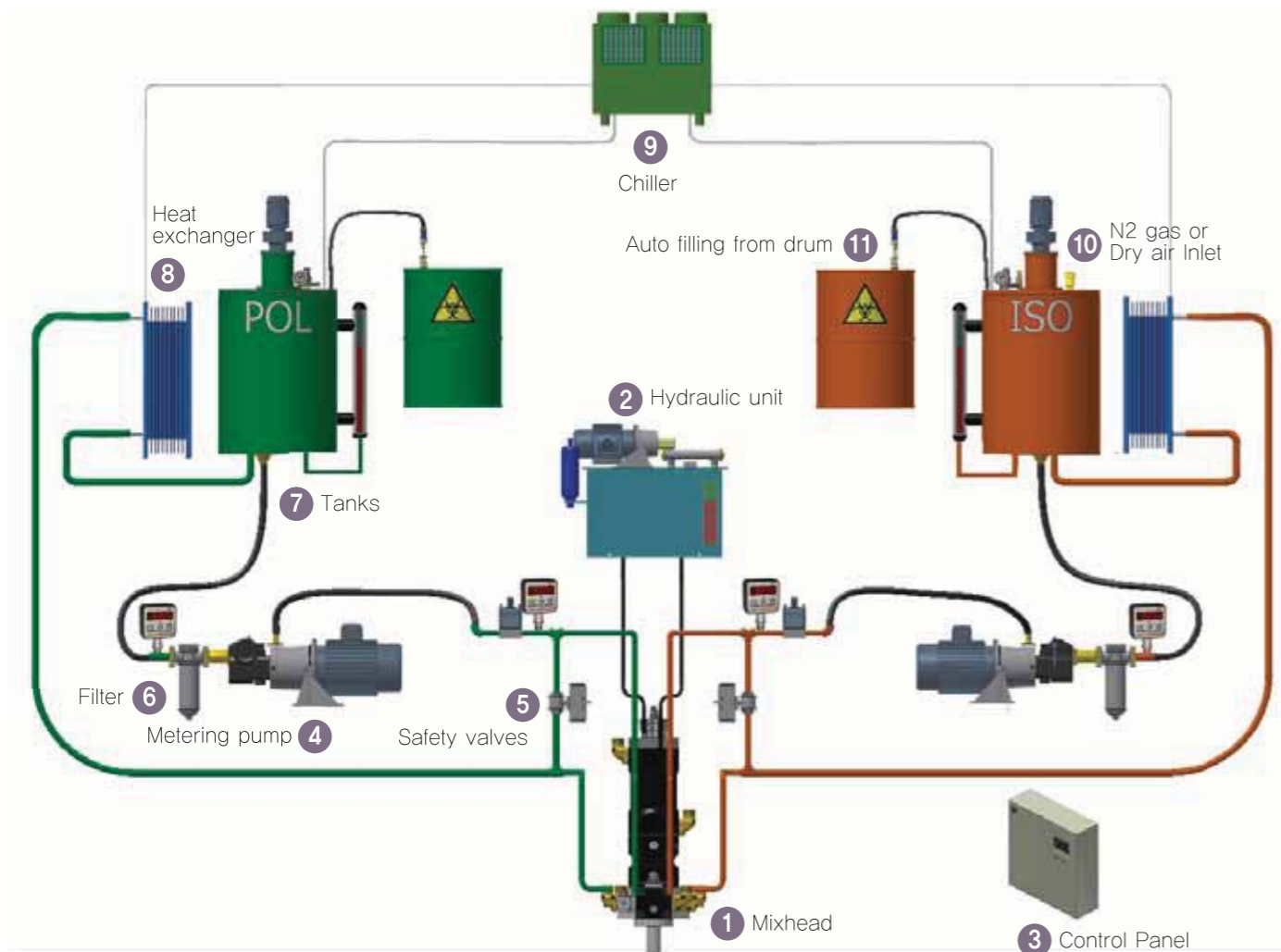


- Semi-rigid filling foam
  - Density range : 100~300 kg/m<sup>3</sup>
  - A:B = approx 2:1

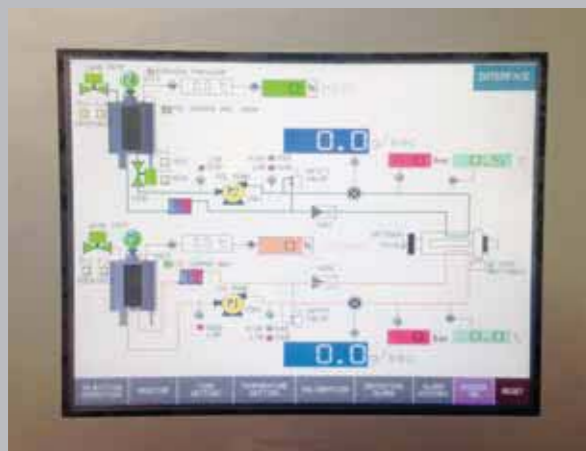


- Semi-rigid integral skin foam
  - Density range : 150~1,100 kg/m<sup>3</sup>
  - A:B = approx 2:1 and 1:1





Control Panel

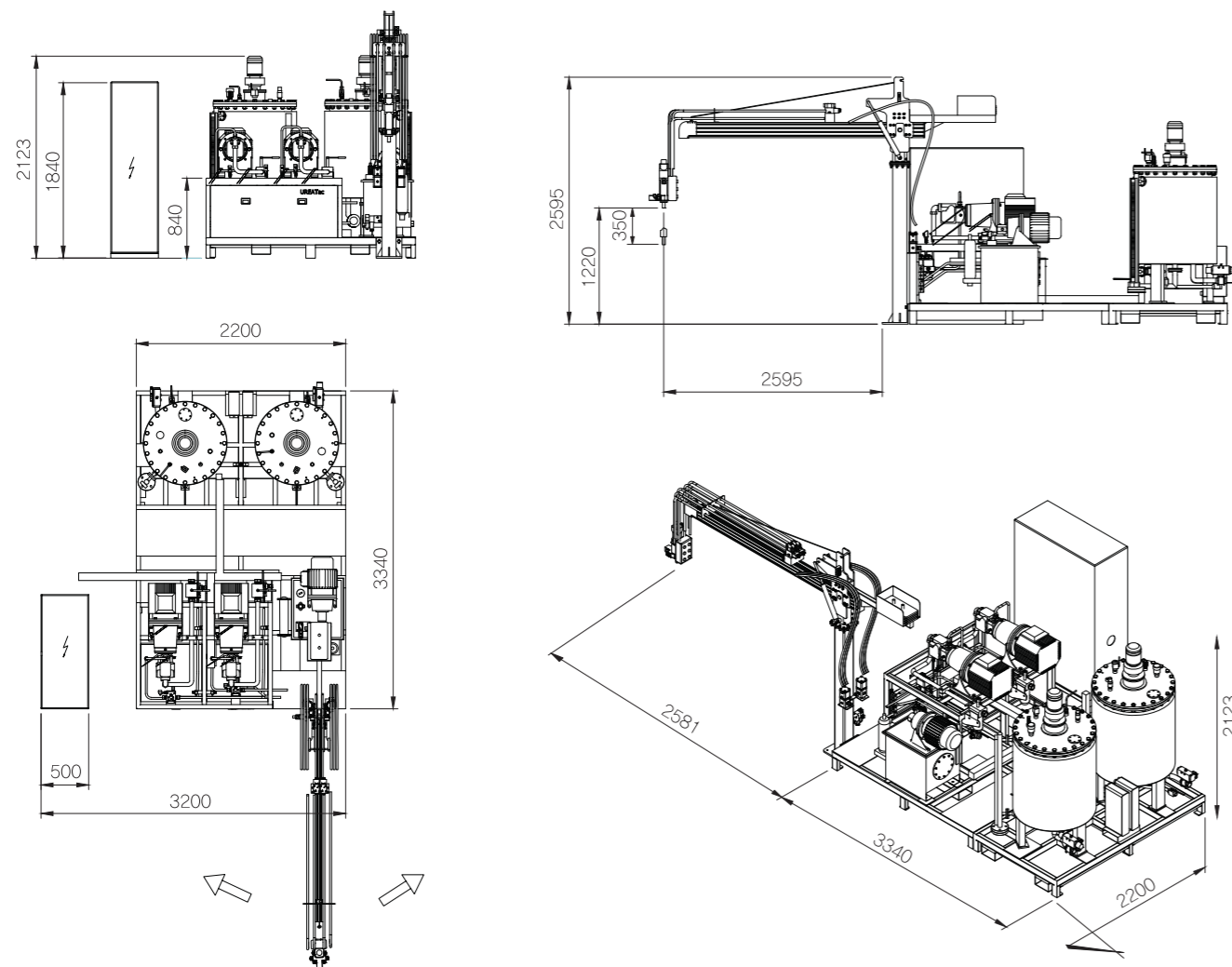


Metering Unit



Edge Filter





### Machine Composition

- Type : Rigid 1:1 and Flexible 2:1 or 3:1
- Mixing head
- Machine Tank size : 60, 250, 500, 1,000 liter with stirrer and Temperature control unit, Level gauge
- Electric Control panel
- Metering pumps and Motors
- Edge filters
- Hydraulic unit
- Steel structure(table) for metering pumps and motors
- High & Low pressure gauge
- Safety Valve
- Low pressure circulation system
- Optional items
  - Flow meter
  - Magnetic coupling for polyol & Iso pumps
  - Chiller
  - Heat exchanger
  - Auto filling device from drum (Drum pump)
  - Insulation for machine tank
  - Inverter system
  - Boom with balancer
  - Upgrade for pentane process



Heat Exchanger & Machine Tanks



Metering Pump



Heat Exchanger



Multi Components Metering Unit



Output Range by  
Mixing Head Models



Straight-Type, 2Comp (MXS)



L-Type, 2Comp (MXL)



L-Type, 4Comp (MXL)

Models	Mixing Ratio & Output (g/sec)			Laminar Flow Range at Open Mould
	1:1	2:1	3:1	
<b>MXL Mixing Heads (L-Type)</b>				
MXL 0608-2C	15~70	15~55	20~45	15~70
MXL 0610-2C	30~300	35~225	40~200	20~140
MXL 0812-2C/3C	40~550	45~410	50~370	40~220
MXL 1014-2C/3C	50~660	120~600	150~500	80~300
MXL 1218-2C/3C	110~1300	120~825	130~740	120~400
MXL 1220-2C/4C	130~1500	130~950	150~900	130~450
MXL 1422-2C/4C	180~1800	200~1500	300~1200	250~650
MXL 1625-2C	250~2200	270~1800	300~1600	400~800
<b>MXS Mixing Heads (Straight Type)</b>				
MXS 10-2C	70~600	230~1000	230~900	
MXS 12-2C	150~1300	450~2300	500~2000	
MXS 18-2C	400~2500	1250~4500	1400~4000	
MXS 25-2C	1000~5000	1500~6000	1500~5000	
MXS 30-2C	1500~7000	3000~9000	3000~8000	
MXS 36-2C/4C	3000~10000			

Mixing head Models by Application

- Refrigerator Door : MXL 1014-2C or MXL 1218-2C  
Cabinet : MXL 1422-2C or MXL 1625-2C
- Door Trim : MXL 0812-2C
- Head Rest : MXL 1014-2C
- Steering Wheel : MXL 0812-3C
- Instrument Panel : MXL 1218-2C
- Discontinuous Panel : MXS 18 or 25, 30
- Car Seat : MXL 1422-2C / 4CD  
MXL 1422-2C / 4CD / 4CS
- Pipe Insulation : MXS 18 or 25, 30, 36

Types of Heads

- MXL  
L-Type Head
- MXS  
Straight Type Head

Components & Kinds of Heads

- 2C : 2 comp
- 3C : 2 comp + Color
- 4CD : 4 comp (2+2 Double Head)
- 4CS : Single 4 comp
- 6CS : Single 6 comp
- 2CF or 4CF : For Fillers (Special Made)

Customer advantage for UREATac mixing head

- Low maintenance service
- Low energy consumption
- Low material consumption
- Low trouble late
- Low repair costs

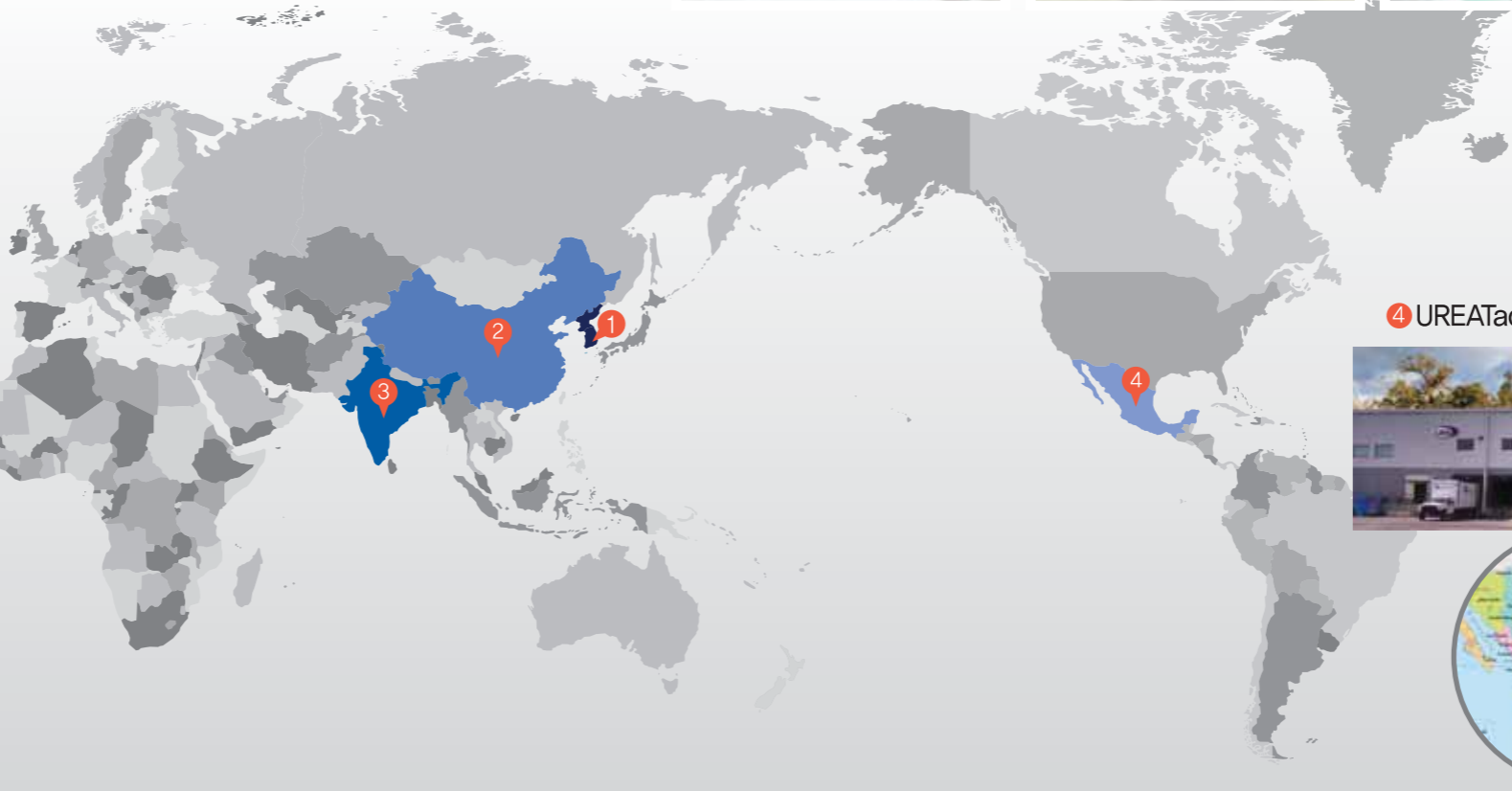


# The Global UREATac!

1 UREATac KOREA 



2 UREATac CHINA 



3 UREATac INDIA 



4 UREATac MEXICO 

